




Annual General Report 2005

The logo for TDF (The Nature Conservancy) is a light blue circle containing a white silhouette of a bird in flight above a white fish. The letters "tdf" are written in white lowercase font at the bottom of the circle.

“*Creating hope
and inspiration
for the future.*”

A solid green vertical bar runs along the right edge of the page.

Chief Executive's report

TDF is delighted to present the annual report and summarised accounts for 2005. It has been an exciting year of growth and opportunity for the charity and we have been able to spend time in this period conducting a full strategic review of our positioning within the voluntary sector and future strategies in favour of both the organisation, our members and the fundraising needs and objectives.

Whilst income may have dropped compared to the last financial year, TDF is in a more robust position entering into the next financial year. Despite the increased pressure and workload that the charity has endured in making sure it maintains consistency and quality throughout the operational practices, TDF has shown that throughout the year it is possible to be effective as well as efficient. Indeed as you will see from the Statement of Financial Activities that almost 90 pence of every pound raised goes directly towards the furtherance of the charity's objective. A significant increase of 10% on the last financial year.

Such achievement has only been possible due to the tireless dedication and hard work from the Board of Trustees and all the staff, volunteers and the input from the therapists, members and supporters. I would like to extend my thanks and appreciation to them all. It has only been possible through this support that TDF has been able to continue providing ongoing quality independent guidance, advice and information to people struggling to cope with disability through its dedicated Information Services and allowed TDF to continue to offer the extensive range of much needed treatments and services at the centre, based in Stanmore at the Royal National Orthopaedic Hospital.



"Everyone is so kind and friendly and the service they offer [at TDF] is personal and professional"

CLIENT COMMENT

TDF would also like to recognise and thank all their Patrons, Friends and Supporters for their continued commitment and much needed financial support.

Frank Bordoni
Chief Executive

Monitoring & evaluation

Throughout the year membership has continued to grow on a daily basis. Almost 60% of the membership are disabled with a further 28% being NHS staff and paid or unpaid Carers, close family members and friends. This indicates that TDF has been successful in reaching the key beneficiary groups and falls in line with our aims and objectives in making a real difference to the lives of adults, children and their families coping with disability and with social disadvantage.



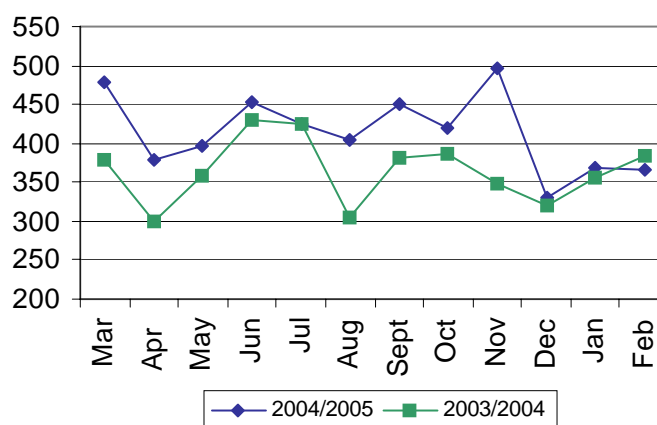
We have noted that two thirds of our membership is female and when breaking down the membership further by age group we find that the vast majority of members are 50+. Currently we noted that only 10% of the membership is under 18 and TDF will therefore be seeking new initiatives in the future to target children and young adults more effectively.

The numbers of people who contacted the Disability Enquiry and Information Service remained constant over the year, with 80% of all enquiries being made by telephone. This is expected to change moving forward with the launch of the new user focused website offering access online and via e-mail. Over the year the dominant enquiry topic was Equipment, closely followed by complementary therapies, such as those currently provided by TDF. Many of the enquirers (26%) found out about us through existing members, or they were a member themselves (Existing member section encompasses both).

Therapy services also continued to grow throughout the year with almost all the members living in the London Boroughs of Harrow, Barnet, Brent, Enfield and Hillingdon and the neighbouring home counties of Hertfordshire and Essex.

Over 80% of our members heard about TDF via our partnerships in the community with other health sector and voluntary sector organisations, or via our existing members, their families and friends.

Therapy Appointments



Trustees' report

The Trustees, who are also directors of the charity for the purposes of the Companies Act, submit their annual report and the financial statements of The Disability Foundation (the charity) for the year ended 28 February 2005. The

Trustees confirm that the annual report and financial statements of the charity comply with current statutory requirements, the requirements of the charity's governing document and the provisions of the Statement of Recommended Practice (SORP) "Accounting and Reporting by Charities" issue in October 2000.



Method of appointment or election of Trustees

The management of the charity is the responsibility of the Trustees who are elected and co-opted under terms of the Articles of Association.

The number of trustees shall be not less than three but not subject to any minimum. One third of the trustees, who have been in office longest retire by rotation at the Annual General Meeting (AGM). Additional trustees can be appointed by recommendation of the existing trustees or by standing for election at the AGM.

"TDF has helped me to change my life, by giving me the tools I needed when I felt so low and has boosted my confidence and self esteem"

CLIENT COMMENT

Organisational structure and decision making

The charity has a Board of Trustees that meet regularly and take the operational decisions of the charity. Day to day running of the charity is carried out by the Chief Executive and Deputy Chief Executive, supported by the staff team.

Trustees' report

Constitution policies and objectives

The charity is registered as a charitable company limited by guarantee and was set up by a Memorandum of Association on 1 February 1999.

The Disability Foundation is a pan-disability organisation which exists to support adults, children, their families, carers and friends coping with disability and social disadvantage. We do this in a number of ways;

- Helpline and Telephone Information Service
- Creating education and awareness opportunities
- Quarterly Newsletters & in-depth Fact-sheets
- Treatment Centre and Children's Sensory Room
- Putting people in touch with Localised support

There have been no changes in the objectives since the last annual report.

“Our commitment to quality and the improvements we have made through continued monitoring and evaluation has led to the charity receiving its first quality assurance mark”

Review of activities and future developments

During the year we have been able to continue to provide quality independent information and support to people struggling to cope with disability through dedicated information services. Thanks to an active presence in the community and voluntary sector we have been able to reach an ever increasing audience. New initiatives during this year have also included the design and build of our client focused website and our expanded work and partnerships with other organisations and support groups.

Our centre based at the Royal National Orthopaedic Hospital has attracted new members almost on a weekly basis and now has waiting lists for many of the therapies on offer. Consequently we have become increasingly aware of the fact that the current location does not fit the specific needs of the charity. Identifying suitable new premises has now become a key task for the next year.

Trustees' report

Risk management and reserves

The Trustees have identified a need to increase the reserves in line with budgetary increases for the forthcoming year. The Trustees have assessed the major risks to which the charity is exposed, in particular those related to the operations and finances of the charity, and are satisfied that systems are in place to mitigate our exposure to the major risks.



“Whilst the income has been relatively low over the year, we have been working on new fundraising and marketing strategies as well as seeking a broader income base and greater financial stability”.

Trustees' responsibilities

Company and charity law applicable to charities in England and Wales requires the Trustees to prepare financial statements for each financial year which give a true and fair view of the state of affairs of the charity and of the surplus or deficit of the charity for that period. In preparing those financial statements the Trustees have;

- Selected suitable accounting policies and applied them consistently;
- Made judgements and estimates that are reasonable and prudent;
- Stated whether applicable accounting standards have been followed, subject to any material departures disclosed and explained in the financial statements; and
- Prepared the financial statements on a going concern basis (unless it is inappropriate to presume that the Trust will continue in operation).

The Trustees have overall responsibility for ensuring that the charity has an appropriate system of controls, financial and otherwise. They are also responsible for keeping proper accounting records which disclose with reasonable accuracy at any time the financial position of the charity and enable them to ensure that the financial statements comply with the Companies Act 1985. They are also responsible for safeguarding the assets of the charity and hence for taking reasonable steps for the detection and prevention of fraud and other irregularities.

This report was approved and signed by the Trustees on 29 November 2005

Auditors Statement

Audit exemption report

Accountant's report to the members on the un-audited accounts

Report on the accounts for year ended 28 February 2005

Respective responsibilities of Trustees and reporting Accountants

The Trustees are responsible for the preparation of the accounts, and they consider that the company is exempt from an audit. It is our responsibility to carry out procedures designed to enable us to report our opinion.

Basis of opinion

In our opinion:

- a) the accounts are in agreement with the accounting records kept by the company under section 221 of the Companies Act 1985, as amended;
- b) Having regard only to, and on the basis of, the information in those accounting records:
 1. The accounts have been drawn up in a manner consistent with the accounting requirements specified in the Statement of Recommended Practice, Accounting and Reporting by Charities, and in section 249C (6) of the Act; and
 2. The company satisfied the conditions for exemption from an audit of the accounts for the year specified in section 249A(4) of the Act and did not, at any time within that year, fall within any categories of companies not entitled to the exemption specified in section 249B(1).



TRUSTIENT

Chartered Accountants
Buckingham House East
The Broadway
Stanmore
Middlesex
HA7 4EB

29 November 2005

Statement of Financial Activities

	Restricted Funds 2005 £	Unrestricted Funds 2005 £	Total Funds 2005 £	Total Funds 2004 £
INCOMING RESOURCES				
Donations and core income	14,000	41,130	55,130	106,989
Activities in furtherance of the charity's objectives	71,934	-	71,934	63,179
Fundraising income	-	37,722	37,722	146,070
Investment income	-	529	529	219
TOTAL INCOMING RESOURCES	85,934	79,381	165,315	316,457
RESOURCES EXPENDED				
Costs of generating funds:				
Fundraising costs	-	17,147	17,147	8,681
Charitable expenditure:				
Costs of activities in furtherance of the charity's objects	85,714	128,296	214,010	178,164
Resources expended on managing the charity	-	27,387	27,387	49,055
TOTAL RESOURCES EXPENDED	85,714	172,830	258,544	235,900
MOVEMENT IN TOTAL FUNDS FOR THE YEAR - NET INCOME / (EXPENDITURE) FOR THE YEAR				
	220	-93,449	-93,229	80,557
TOTAL FUNDS AT 1 MARCH 2004	7,196	117,907	125,103	44,546
TOTAL FUNDS AT 28 FEBRUARY '05	7,416	24,458	31,874	125,103

Balance Sheet

	£	2005 £	£	2004 £
FIXED ASSETS				
Tangible fixed assets		15,696		19,818
CURRENT ASSETS				
Debtors	2,200		28,787	
Cash at bank	33,696		84,961	
	<u>35,896</u>		<u>113,748</u>	
CRED TORS				
amounts falling within one year	<u>-19,718</u>		<u>-8,463</u>	
NET CURRENT ASSETS		<u>16,178</u>		<u>105,285</u>
NET ASSETS		<u>31,874</u>		<u>125,103</u>
CHARITY FUNDS				
Restricted Funds		7,416		7,196
Unrestricted Funds - General		24,458		117,907
		<u>31,874</u>		<u>125,103</u>

The financial statements have been prepared in accordance with the special provisions of Part VII of the Companies Act 1985 relating to small companies and in accordance with the Financial Reporting Standard for Smaller Entities (effective June 2002).

The financial statements were approved by the Trustees on 29th November 2005.

Legal & Administrative

TRUSTEES

Mrs M Freedman, Chair (resigned 17/05/2005)

Mr M Steinberg, Treasurer (until 18th May 2005) (resigned 18/05/2005)

Mrs J Desmond, Chair (from 17th May 2005)

Mrs S Portner (appointed 17/05/2005)

Mrs R Myerson (appointed 12/09/2005)

Mr R Gibbons, Treasurer (from 18th May 2005) (appointed 18/05/2005)

COMPANY REGISTERED NUMBER

03705381

CHARITY REGISTERED NUMBER

1076761

REGISTERED OFFICE

Royal National Orthopaedic Hospital
Brockley Hill
Stanmore
Middlesex HA7 4LP

ACCOUNTANTS

TRUSTIENT
Chartered Accountants and Registered Auditors
Buckingham House East
The Broadway
Stanmore
Middlesex HA7 4EB

BANKERS

The Co-operative Bank PLC
Balloon Street
Manchester
M60 4EP

STATUS

The Disability Foundation (TDF) is a charitable company limited by guarantee. Its governing document is its Memorandum of Articles of Association. TDF is an independent charity and part of the DIAL-UK network.





the disability foundation

Based at RNOH, Brockley Hill, Stanmore
Middlesex, HA7 4LP

REGISTERED CHARITY NUMBER 1076761

Telephone: 020 8954 7373

Facsimile: 020 8954 7414

Minicom: 020 8954 7413

www.tdf.org.uk

info@tdf.org.uk